

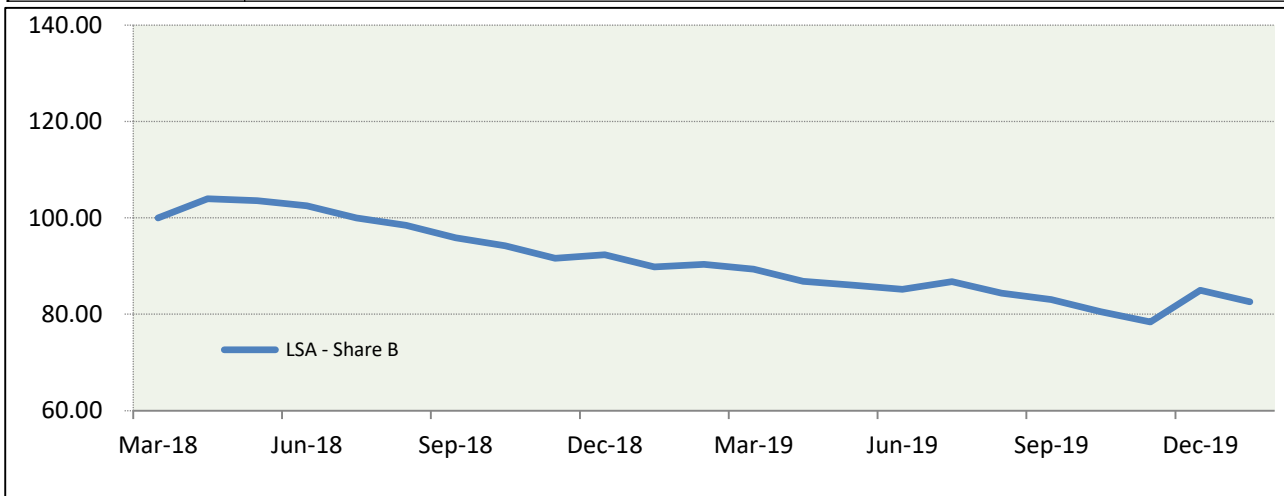
Life Settlement Assets PLC – Ordinary Share B

Investment Objective

The company's investment objective is to achieve capital appreciation by arbitraging the demographic risk in the life settlement business. This strategy offers uncorrelated returns from traditional capital markets.

Estimated Performance⁽¹⁾

| | Jan | Feb | Mar | Apr | May | Jun | Jul | Aug | Sep | Oct | Nov | Dec | YTD | Roll. 12M |
|---------------------------|--------|-----|-----|-----|-----|-----|-----|-----|-----|-----|-----|-----|--------|-----------|
| Est. Performance (%) 2020 | -2.81% | | | | | | | | | | | | -2.81% | -8.06% |



Commentary

Investment Terms

1.5% Management Fee

Estimated NAV (USD)

14 445 770

NAV/Share

0.9897

The coronavirus outbreak is feeling a lot less distant today for many Americans, even if they live far from any reported case. The total number of people who have contracted Covid-19 since the coronavirus reached the United States in January has grown to nearly 1,700 people. This will likely continue jumping as more tests become available and some facilities begin conducting drive-through testing. The early data from China and Italy suggested that older adults were the most vulnerable to the worst effects of the disease.

The Share Class is reporting a performance of -2.81% for the month of January. One maturity for a face value of \$0.05M was registered this month.

| Number Of Policies | Death Benefits (USD) | Matured Policies YTD | Maturities YTD (USD) |
|--------------------|----------------------|----------------------|----------------------|
| 97 | 45 506 658 | 1 | 50 000 |

Trust Investment Manager

Acheron Capital Ltd.

Company Secretary

ISCA Administration Services Limited

Administrator

Compagnie Européenne de Révision

ISIN Ticker

GB00BF1Q4C12
LSAB

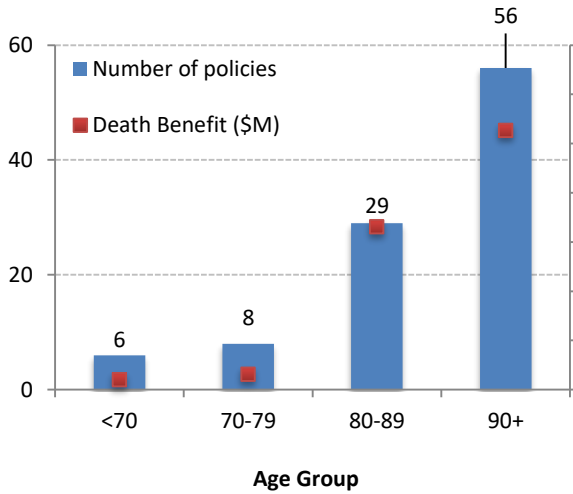
Auditor

BDO UK LLP

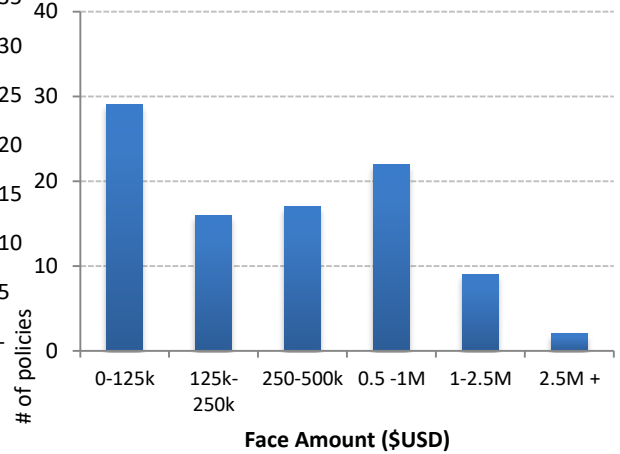
Info

life@acheroncapital.com
+44 207 258 5990

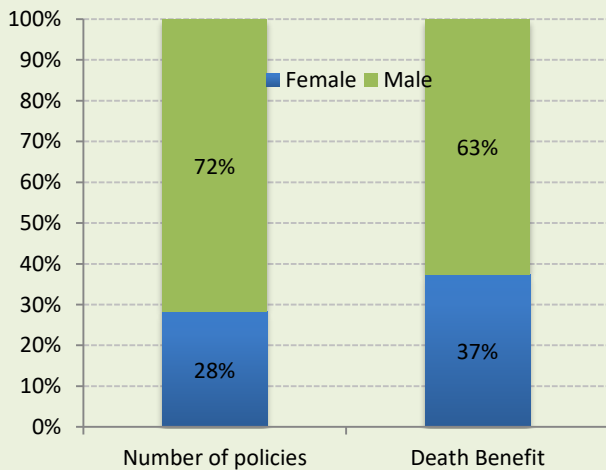
Distribution by Age⁽¹⁾



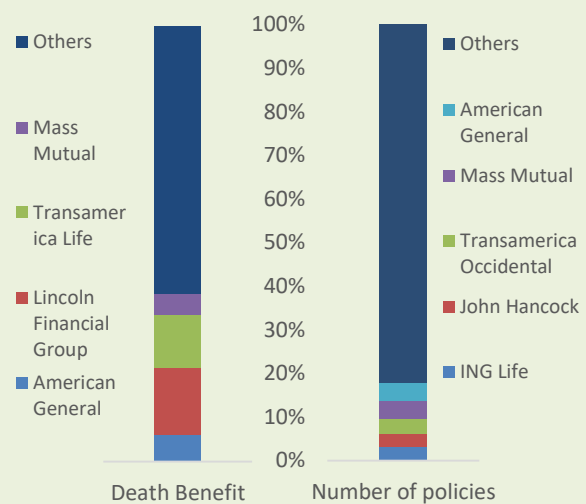
Distribution by Death Benefit Amount⁽²⁾ (USD)



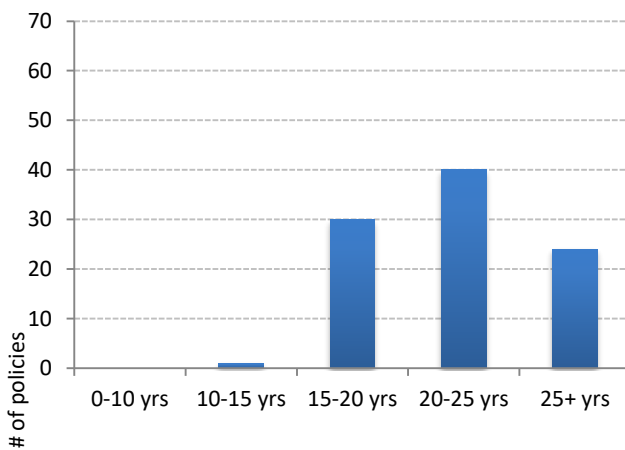
Distribution by Gender



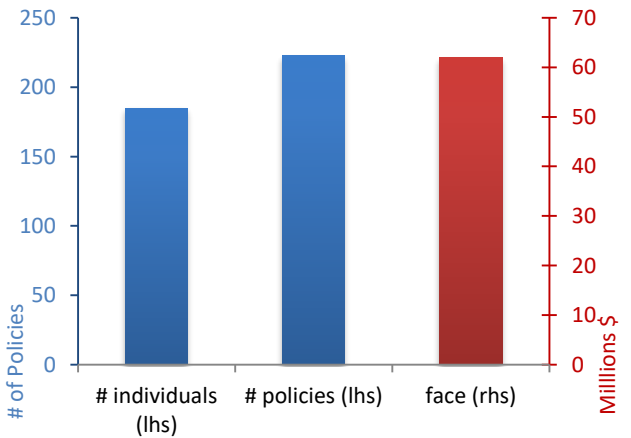
Distribution by Insurance Company



Distribution by Issue Date (Yrs)⁽³⁾



Maturities Since Inception (USD)



* Capital and/or dividend payment(s)

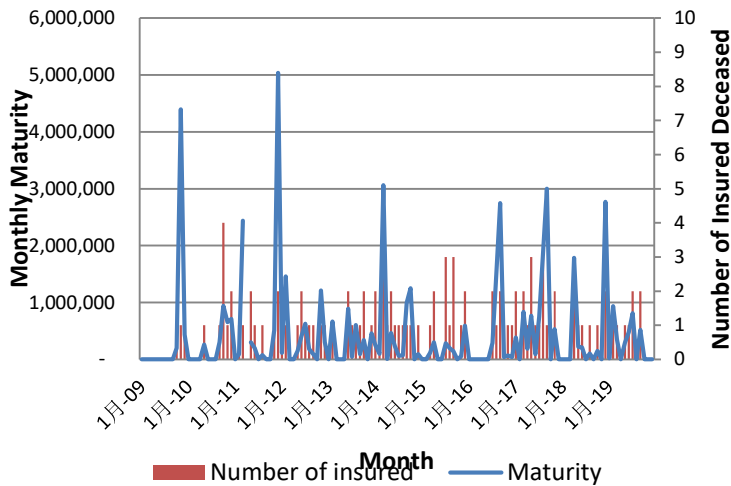
(1) 4 policies are survivorship, adding up 4 insureds.

(2) Indicates the available face amount to LSA which is a fractional interest of initial face amount.

(3) Distribution by issue dates reflects the time since the life insurance policy was issued.

Source of Data: Acheron Capital Ltd unless otherwise stated.

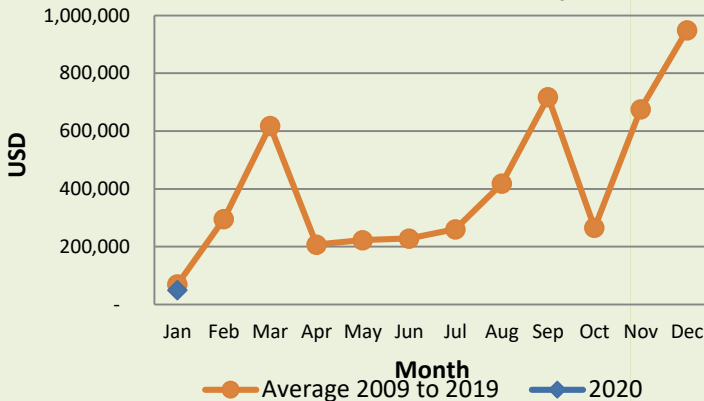
Historical Maturity



Maturities January 2020

| | |
|--|--------|
| Number of policies matured in January 2020 | 1 |
| Corresponding number of insured | 1 |
| Total death benefit in January 2020(US\$) | 50 000 |
| Valuation of matured policies in Book (US\$) | 0 |

Notification of Maturity



Premiums Situation (US\$) ⁽¹⁾

| | |
|--|---------|
| Servicers Premiums Projection for the next 12 months ⁽²⁾ | \$ 3.8M |
| Mortality Adjusted Premiums Projection for the next 12 months ⁽²⁾ | \$ 3.6M |
| Estimated COI Net of Mortality for the next 12 months ⁽²⁾ | \$ 3.7M |

Top 5 Coverage

| Insured | Face (million) | Total Face (millions) | Age (ALB) | Expiration Age* |
|---------|----------------|-----------------------|---------------------|-----------------|
| 1 | 5 | 5 | survivorship: 94/98 | 100/105 |
| 2 | 1.5/1/0.3 | 2.8 | 88 | 100/100/100 |
| 3 | 2.75 | 2.75 | 88 | 100 |
| 4 | 1.4 | 1.4 | 97 | 100 |
| 5 | 0.3/0.9 | 1.2 | 83 | 100/100 |

Cash Situation (US\$) ⁽¹⁾

| | |
|--|---------|
| Cash at hand and similar | \$ 1.9M |
| Gross Cash in Policies ⁽³⁾ (estimated as of end Dec 2019) | \$ 1.0M |
| Loan on Cash in Policies (estimated as of end Dec 2019) | \$ 0M |
| Net Cash in Policies ⁽³⁾ (estimated as of end Dec 2019) | \$ 1.0M |
| Maturities to be received | \$ 0.6M |

(1) Figures as provided by third parties

(2) Adjusted for option trigger

(3) Cash in a policy can typically be borrowed at an interest rate of 4% to 8%. Surrender charge included.

* In case that one insured has more than one policy, their expiration ages are ordered by decreasing face.

Issued by Acheron Capital Limited, a company registered in England, no. 05588630 at Suite1, 3rd Floor, 11-12 St. James's Square, London SW1Y 4LB, England.

Acheron Capital Limited is authorized and regulated by the Financial Conduct Authority ("FCA") and appears on the FS Register under reference FRN 443685.

The investment products and services of Acheron Capital Limited are only available to professional clients and eligible counterparties; they are not available to retail clients. This document does not constitute an offer to buy or sell shares or units in any fund or funds managed or advised by Acheron Capital Limited. The prospectus of the funds is the only authorized document for offering shares or units in the funds. The prospectus may only be distributed in accordance with the laws and regulations of each appropriate jurisdiction in which any potential investor resides. Investors are also reminded that past performance should not be seen as an indication of future performance and that they may not get back the amount originally invested. UK Investors do not benefit from the Financial Services Compensation Scheme (FSCS). Investment in the funds carry risks which are more fully described in the prospectus. The funds are only suitable for sophisticated investors who are aware of the risks of investing in hedge funds.